

## SOLUTION BRIEF

# Enhance Oracle Upgrades

Upgrade in-place and run workload simulations with Pure Storage®.

Oracle database versions update every few years. Security and quarterly upgrades are released more frequently. With in-place upgrades leveraging zero-footprint clones and workload simulations, Pure Storage can help simplify your upgrades, making them safer and more predictable than ever. And with Pure1® Workload Planner you can use advanced artificial intelligence to project and plan future workloads.

## In-place Upgrades

Upgrades of any kind can be challenging due to limited space and few options for net new hardware, making in-place upgrades appealing. For many, a successful upgrade is only two steps away with zero-footprint clones. With Pure, you can carry out a simple rollback in just a few seconds. While in-place upgrades are often not an option due to their high-risk nature and long recovery times, Pure lets you create a zero-footprint clone for a full upgrade, update, or new version faster than you may realize.

## Workload Simulation

Pure's Workload Planner—a software-as-a-service tool for all Pure fleets—lets you project future workloads and simulate modifications to existing array workloads. For example, you can:

- Adjust the projection from one month to one year and easily switch between daily tactical decisions and long-term strategic ones
- Simulate scaling workloads represented by any set of volumes based on a multiplier
- Simulate cloning and migrating workloads across different arrays in your fleet.

This allows you to optimize your existing environment, simulate unplanned growth, and gain balance between upgrading hardware or moving workloads around.



### Zero-footprint Clones

Pure offers near-instantaneous roll-backs and quicker in-place upgrades.



### AI Predictions

Use artificial intelligence to predict load, and plan capacity to prepare for upgrades.

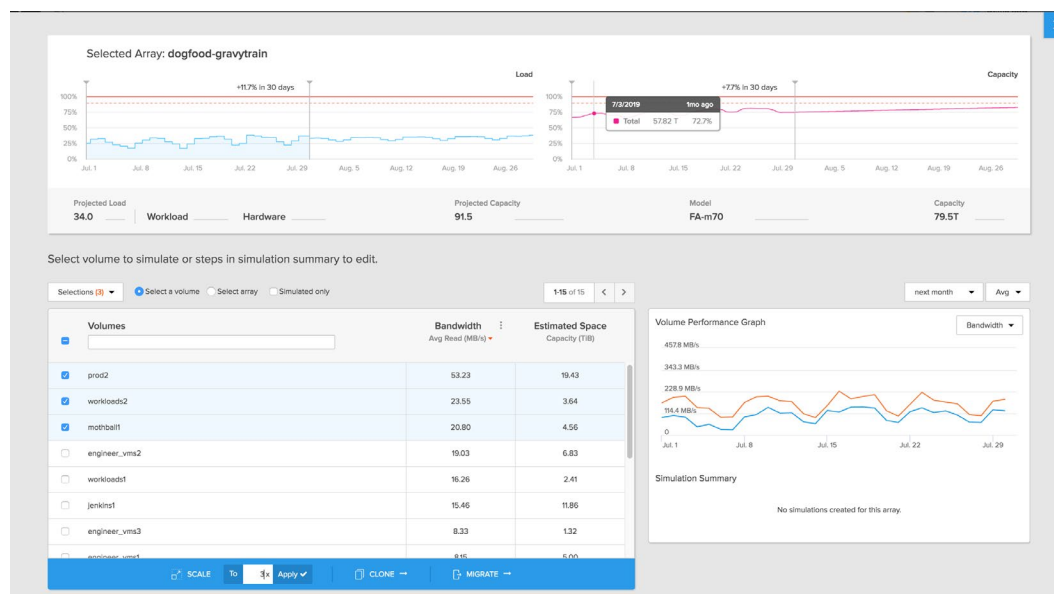


Figure 1. Sample of the Pure1 workload simulator showing some capabilities of the scale, clone, and migrate workload features.

With Workload Planner, you can see all the volumes on an array, plus performance metrics like bandwidth, latency, and IOPS. In addition, you can see analyzed capacity data to estimate the space used by each volume. As you plan upgrades, these metrics are useful in helping you decide whether you need additional capacity for the current and future upgrades.

## Additional Resources

- Learn more about [Pure solutions for Oracle](#).
- Explore the features and benefits of [Pure1](#).
- Explore the options of [Pure Professional Services](#).